

UG - Multidisciplinary Entrepreneurial Development (M.E.D)

India's first working degree

**MULTIDISCIPLINARY
ENTREPRENEURIAL
DEVELOPMENT**

Enabling the next generation of
enterprising leaders



+91 84472 84008
admissions@letsenterprise.in
1/23, New Laxminarayan Society,
Koregaon Park, Pune 411002,
Maharashtra

**2024 batch starts
August 2024**



3-year UnderGrad Program in Multidisciplinary Entrepreneurial Development (UG-M.E.D.)

***Fastrack your career with
the only Bachelor's working degree that
actually makes you industry ready***

Why this program?

The need of the industry is a young talent that can

1. Find problems to work on and not wait to be given tasks
2. Research and analyse solutions
3. Execute well - get things done
4. Ask questions or seek help when stuck
5. Work in teams and collaborate with peers and seniors
6. Learn 'on the go' and not get limited by what one doesn't know

Increasingly, the global economy demands that young people enter the workforce not only with a college degree but also with a set of transferable, entrepreneurial skills and attitudes that can help them succeed in almost any job or industry. This includes the ability to take initiative and think on your feet, to critically solve problems, and to communicate effectively. Learning these and other skills that are part of the entrepreneurial mindset is central to becoming career-ready. As a result, entrepreneurial thinking has become the mantra for many organizations interested in preparing youth for the future.

The UG-M.E.D. will help young people to move into a space of 'limitless learning' and cultivate their entrepreneurial mindset.

The Let's Enterprise journey *So far...*

2018-2024

Let's Enterprise is an education organisation that runs programs for people interested in developing an entrepreneurial mindset. In the last 5 years, we have worked with 74+ participants in our flagship program - Enterprise India Fellowship, from 11 cities who have on average spent 400+ hours on real-life industry projects with 42+ startups and organisations across the country.

In 2023, building upon the testament of the past 5 years and the rich experience of over 74 students, we introduced B.E.T. and UG M.E.D. with a cohort of 11 hungry students. They're immersed in India's first working degree experience, where students work on solving practical business problems with startup Founders and CEO's.

We have developed highly impactful experiential learning modules, career planning and self-awareness components in the last 5 years. We have launched UG M.E.D. (3 years) and Basecamp for Entrepreneurial Training (B.E.T.) programs for students who want to learn business and life skills practically along with their education, or based on what career stage students are.

ARYA FOUND HER *Real* SELF



Traditional Bachelor's education is conducted mostly 'in-classroom' with 2 - 3 hours of lectures daily. The assessment format is mainly tests and exams. Usually beyond the 15 - 16 hours of lectures weekly, students have most of their free time to wander around. Some participate in extracurricular, clubs and activities.

The concept of the 'Working Degree' is that by the time the student completes their 3 or 4-year undergrad program, they should walk out with:

1. 1.5 - 2 years of actual work experience
2. Exposure to 5 - 6 sectors
3. Professional skills that are actually needed
4. Confidence and self-awareness lead to the ability to take decisions and make commitments.
5. An attitude of lifelong learning

WHY

Working degree?

The UG-M.E.D. program by Let's Enterprise is India's first Working Degree in the undergrad education space and is designed to help youngsters with an entrepreneurial mindset to fast-track their careers.

+91 84472 84008
admissions@letsenterprise.in
1/23, New Laxminarayan Society,
Koregaon Park, Pune 411002,
Maharashtra

**UG-M.E.D. 2024
batch starts
August 2024**

Program Investment

3-year Undergrad program in Multidisciplinary Entrepreneurial Development (UG-M.E.D.)

| | | |
|-------------------------|-----------------|----------------|
| Course registration fee | On enrollment | Rs. 40,000/- |
| First Year Fees | 1st August 2024 | Rs. 3,95,000/- |
| Second Year Fees | 1st June 2025 | Rs. 2,95,000/- |
| Third Year Fees | 1st June 2026 | Rs. 1,95,000/- |



Scholarship Available

Scholarship Options -

1. Merit-Based, Open Category - Scholarship upto 30%
2. Merit + Need-Based - Scholarship up to 80% (Need to provide last 3 years IT returns of parents)
3. Defence Families scholarship - 15% Scholarship (either parent should have served in the Indian Defence Forces)

Undergrad program conceptualised,
designed and run by



BBA Degree provided by
UGC approved university

+91 84472 84008
admissions@letsenterprise.in
1/23, New Laxminarayan Society,
Koregaon Park, Pune 411002,
Maharashtra

UG-M.E.D. 2024
batch starts
August 2024

Smart Campus

The M.E.D. will be conducted in a smart campus mode in Pune city. Our firm belief is that the 'city is your campus' and that businesses, organisations and individuals across the city offer a much more varied and deeper learning experience than a single large campus offers.

We believe such a smart campus offers the following benefits over a typical college campus:

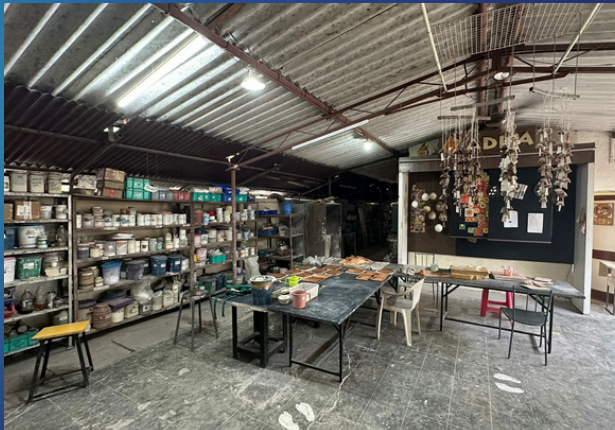
1. Access to specialised knowledge
2. No option of hanging around in the same space the entire day
3. Meet new people and have new experiences
4. Develop the confidence of managing oneself in different environments
5. Be on the move throughout the day, meeting people and visiting different places

Below are some of our smart-campus spaces tied for the academic year starting from 2023

Let's Enterprise Space - a space for group discussions, deep working, and brainstorming.



Bohriali Studio - an art and maker space located in the heart of the city areas surrounded by industrial suppliers and workshops of every type - electrical, electronic, mechanical, food, automotive, etc.



ADIPA Studio - a space for students to develop art and design-based projects, for hosting events, and group activities.

Klug Avalon Design Center - an innovative and fast-growing electronics company, a space for students to work on software, hardware and 3D design projects.



Stahl Factory - one of the country's fastest-growing home products companies, this will be a space for students to ideate and prototype homeware/office products.

MCCIA Pune - An Industrial association connected to 3000+ Industries in and around Pune. A space for group discussions, private meetings, board room facilities, events, seminars, etc.



Breakdown of 1st, 2nd and 3rd year

- Students check in at Let's Enterprise space daily from 8 am to 11 am.
- After that, they need to move to one of the smart campus centres, or elsewhere in the city based on the challenge/project assigned to them.
- During the Apprenticeship period, students need to go directly to their place of work.
- Twice a week, they need to check in at Enterprise Space from 7 pm to 9 pm.

| YEAR 1 | | | | |
|--------|-------|--|--|---|
| | Month | Project learning | Skills tracks | BBA Subjects |
| SEM 1 | Aug | Kickstart | Written communication Research & analysis Art & Literature Problem Solving Critical Thinking | Fundamentals of Management Marketing Accounting Economics Environment studies |
| | Sept | Green Room Daily Challenges | | |
| | Oct | Prepare for Industry outreach Storysells | | |
| | Nov | BREAK REGEN 1 | | |
| | Dec | Travelling project BREAK | | |
| SEM 2 | Jan | Apprenticeship 1 | Marketing campaign design Legal & Commercial Data Gathering and Visualisation | Organisation Behaviour Indian Economy Marketing Management Business Environment, Indian Banking System |
| | Feb | | | |
| | Mar | | | |
| | Apr | DesignThinking Challenge | | |
| | May | REGEN 2 | | |
| | June | BREAK | | |

| YEAR 2 | | | | |
|--------|-------|------------------|--|--|
| | Month | Project learning | Skills tracks | BBA Subjects |
| SEM 3 | July | Apprenticeship 2 | Digital marketing CRM Project management | Human resources management Banking operations Introduction to Psychology Research Methodology Business Law |
| | Aug | | | |
| | Sept | | | |
| | Oct | | | |
| | Nov | #KARO | | |
| | Dec | | | |
| | Jan | | | |
| SEM 4 | Feb | Apprenticeship 3 | Environment, sustainability and governance Supply chain | Management Information Systems Entrepreneurship International Business Quantitative Techniques Financial Management Digital Marketing |
| | Mar | | | |
| | Apr | | | |
| | May | | | |
| | June | REGEN 3 | | |
| | July | BREAK | | |
| | | | | |

| YEAR 3 | | | | |
|--------|-------|--|--|---|
| | Month | Project learning | Skills tracks | BBA subjects |
| SEM 5 | Aug | Apprenticeship 4 OR Individual Project | Money & Wealth Storysells | Choose a specialisation: Marketing Management Human Resource Management |
| | Sept | | | |
| | Oct | | | |
| | Nov | | | |
| | Dec | | | |
| SEM 6 | Jan | Apprenticeship 5 OR Individual Project | Environment, sustainability and governance Supply chain | Finance Management International Business Management |
| | Feb | | | |
| | Mar | | | |
| | Apr | | | |
| | May | | | |
| | June | | | |

Industry Partners

So far, 200+ enterprising individuals from different fields have engaged with Let's Enterprise students in multiple capacities-

- Thinking partners for projects
- As Coaches for reflective processes
- Conducting workshops on different topics
- As clients for consulting projects
- Industry hosts for apprenticeships

Let's Enterprise has a strong network of 50+ industry tie-ups in Pune and beyond. These are established businesses ranging from small and medium-sized industries, entrepreneurs and start-ups, and some large corporations where students will be placed for 'mentored' apprenticeships. The names below also include companies where our students have already worked on mentored projects.



Lighthouse Mentors

We believe in connecting with professionals who have soared to great heights in their careers and achieved excellence in various fields. These accomplished individuals generously contribute their time throughout the year to mentor, advise, and guide students in our M.E.D program.

As our students embark on their journey, they will have the privilege of working on projects and apprenticeships under the expert guidance of these industry experts. Our partnership with Lighthouses is flexible, allowing for personalised one-on-one sessions, engaging workshops, and project guidance tailored to the specific needs of our students. These connections will serve as catalysts for transformation in the lives of our M.E.D graduates.

Unlock a world of possibilities through these professionals who have walked the path of success, ignite your potential, and embrace the transformative power of our network.



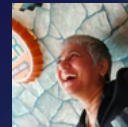
Mohit Khandelwal
Tata Consultancy Services



Gopal Garg
Ashoka



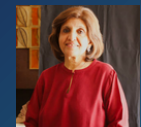
Kayomarz Anklesvaria
Cyber Security Corporation



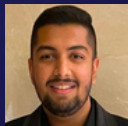
Purnima Joshi
Swap - Platform for sustainable living



Tanay Bothara
Architect



Ruby Jhunjhunwala
Ceramic art studio - Adipa



Akansh Jain
EntreLogy, Edtech



Neetu Kapasi
IKEA Supply South Asia



Malhar Ganla
Freedom from Diabetes and Obesity



Sagar Devaram Minde
artseacinema



Neeraj Rayate
DOSS



Priya Hajela
Author



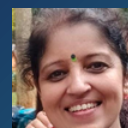
Paresh Shah
Highradius Technolgoies Pvt Ltd



Sathya N. Natarajan
Area Sabha Association of Pune



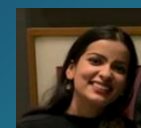
Aniruddha Bhagwat
Ideosphere



Dr Surekha Bhalerao
Smile Wellness Foundation



Sukh Mishraa
PEER Coaching India



Isha Sharma
Haqdarshak



Hansika Singh
Forum for the future



Deepak Khaitan
Sunshine Worldwide School



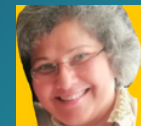
Pavitra Mohan
Basic Health Care Services



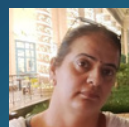
Ishaan Kanoi
HGGPL & Vaara



Gayatri Gogate
Cummins



Punam Dharkar
Swap -Platform for sustainable living



Shipra Alam
Anoothi Design Studio



Rajainall Dhanall
PwC South Africa

What a 'working degree' will give you, that no other UG program can...

- Letters of References from each Apprenticeship - 4 nos minimum
- Recommendation Letters from program mentors and 2 - 3 industry mentors
- Your Personal Digital Portfolio development on your personal brand website and LinkedIn
- Your own Blog with a minimum of 24 entries
- A Professional Network of 20 - 30 deep industry connections with whom who have worked and who can refer you for jobs, projects and university entrances
- Assured Work Opportunities with an entrepreneur or fast-growing startup
- 6-month handshake period of support even after you get your job or join further education
- 1-year mentoring support if you start your own business -upon selection.
- BBA Degree from UGC approved university which is accepted by universities across India and globally
- Professional skills and the Confidence to walk into any workplace and add value from week 1

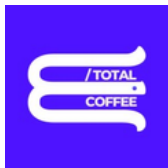
+91 84472 84008
admissions@letsenterprise.in
1/23, New Laxminarayan Society,
Koregaon Park, Pune 411002,
Maharashtra

**UG-M.E.D. 2024
batch starts
August 2024**

Placements and opportunities you CREATE

All our students go through a process "STORYSELLS", developed by Let's Enterprise mentors that prepares them to reflect on pieces of their story, build a body of work around that and create a strategy to connect with people and organisations they want to work or collaborate with.

After going through the STORYSELLS process and working with mentors, students have successfully found opportunities for themselves at these organisations:



+91 84472 84008
admissions@letsenterprise.in
1/23, New Laxminarayan Society,
Koregaon Park, Pune 411002,
Maharashtra

UG-M.E.D. 2024
batch starts
August 2024

Admission process



1. Application form - We invite you to take the first step and fill out the application form [HERE](#). Just be yourself and write the responses authentically.



2. Personality Assessment - You will be asked to complete a Self Assessment tool which will help you and us understand your thinking and working style. This is an industry-standard tool and has been used by us for the last 7 to 8 years in coaching and interviewing. You will find the results useful for your own self-understanding and growth. The results will help us ask you better questions in the interview.



3. Case study solving - you will be given a case study which will require you to think about real-life situations and come up with your independent answers. This will also help us understand your confidence with the four foundational abilities - reading, writing, arithmetic and critical thinking. A large part of the M.E.D. will require you to do your own research on various topics and come up with your own analysis and communicate orally and in writing. The case study is based on a cutting-edge technology initiated in India and we are sure you will find it very interesting and also challenging. Be relaxed, and answer with your authentic thoughts and ideas. That's what we care for the most.



4. Personal Interview - The interview would be held on Zoom. The Student will have to appear for the interview with the Enterprise Mentors as a part of the application process.



5. Conversation along with Parents - The UG-M.E.D. program is highly experiential and it is crucial that your family fully supports the expected outcomes of the program. Therefore, after you pass the initial interview, we would like to schedule an open conversation with you and your family members who are involved in your career decision-making and development.



6. Scholarship Application - Once stages 1 to 4 are completed and we offer you a place on the M.E.D. journey, you may initiate the scholarship application process. We are looking for independent-minded individuals who strongly focus on action and taking initiative. The scholarship application will require you to compile your body of work (view our founder's Ted talk [HERE](#)) and demonstrate your action-oriented nature. This will be challenging, but we are sure it will be a game-changer for you.



Scan to know more

let's **ENTERPRISE** 

+91 84472 84008
admissions@letsenterprise.in
1/23, New Laxminarayan Society,
Koregaon Park, Pune 411002,
Maharashtra

UG-M.E.D. 2024
batch starts
August 2024

RIGHT TO WIN

Enabling the next generation of enterprising leaders

let's **ENTERPRISE**